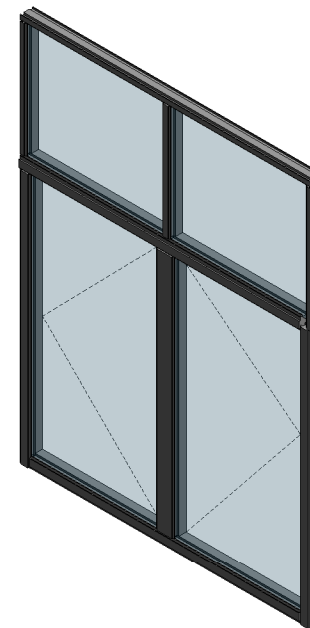
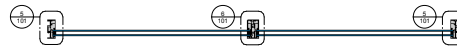


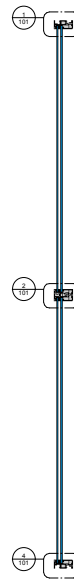
① PROJECT-OUT WINDOW



② OUTSWING CASEMENT WINDOW



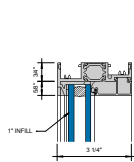
① BASIC WALL EXAMPLE
1/12" = 1'-0"



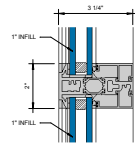
② SECTION
1/12" = 1'-0"

KAWNEER AN ARCONIC COMPANY

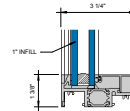
555 Guthridge Ct.
Technology Park/Atlanta
Norcross, GA 30092 USA
Tel: +1 770 449 5555



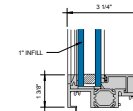
① FIXED HEAD
6" = 1'-0"



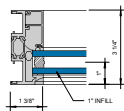
② FIXED HORIZONTAL
6" = 1'-0"



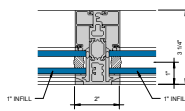
③ FIXED SILL
6" = 1'-0"



④ FIXED SILL
6" = 1'-0"



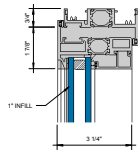
⑤ FIXED JAMB
6" = 1'-0"



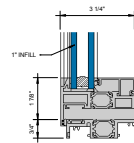
⑥ FIXED VERTICAL
6" = 1'-0"

KAWNEER AN ARCONIC COMPANY

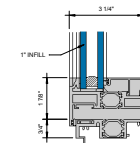
555 Guthridge Ct.
Technology Park/Atlanta
Norcross, GA 30092 USA
Tel: +1 770 449 5555



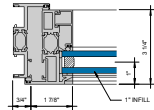
① PROJECT-OUT HEAD
6" = 1'-0"



② PROJECT-OUT SILL
6" = 1'-0"



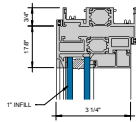
③ PROJECT-OUT SILL
6" = 1'-0"



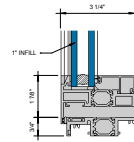
④ PROJECT-OUT JAMB
6" = 1'-0"

KAWNEER AN ARCONIC COMPANY

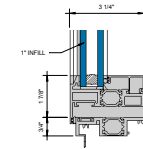
555 Guthridge Ct.
Technology Park/Atlanta
Norcross, GA 30092 USA
Tel: + 1 770 449 5555



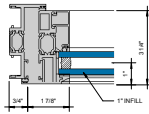
① PROJECT-OUT HEAD
6" = 1'-0"



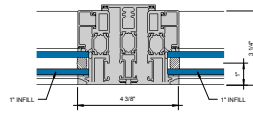
② PROJECT-OUT SILL
6" = 1'-0"



③ PROJECT-OUT SILL
6" = 1'-0"



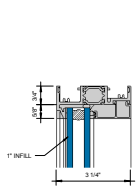
④ PROJECT-OUT JAMB
6" = 1'-0"



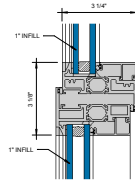
⑤ PROJECT-OUT VERTICAL
6" = 1'-0"

KAWNEER AN ARCONIC COMPANY

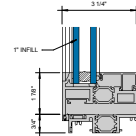
555 Guthridge Ct.
Technology Park/Atlanta
Norcross, GA 30092 USA
Tel: +1 770 449 5555



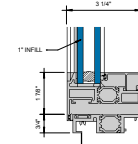
① **FIXED HEAD**
D₂ = 1'-0"



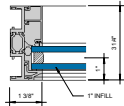
② **PROJECT-OUT HEAD**
D₂ = 1'-0"



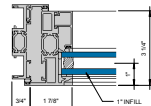
③ **PROJECT-OUT SILL**
D₂ = 1'-0"



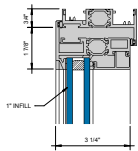
④ **PROJECT-OUT SILL**
D₂ = 1'-0"



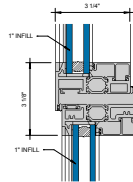
⑤ **FIXED JAMB**
D₂ = 1'-0"



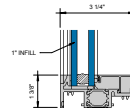
⑥ **PROJECT-OUT JAMB**
D₂ = 1'-0"



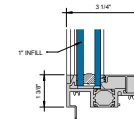
① PROJECT-OUT HEAD
D₁ = 1'-0"



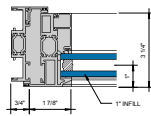
② PROJECT-OUT SILL
D₂ = 1'-0"



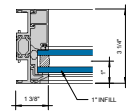
③ FIXED SILL
D₃ = 1'-0"



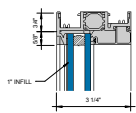
④ FIXED HEAD
D₄ = 1'-0"



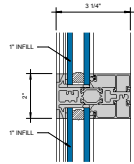
⑤ PROJECT-OUT JAMB
D₅ = 1'-0"



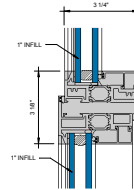
⑥ FIXED JAMB
D₆ = 1'-0"



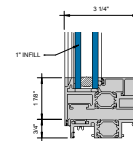
① FIXED HEAD
6" = 1'-0"



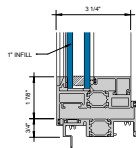
② FIXED HORIZONTAL
6" = 1'-0"



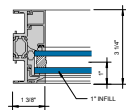
③ PROJECT-OUT HEAD
6" = 1'-0"



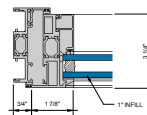
④ PROJECT-OUT SILL
6" = 1'-0"



⑤ PROJECT-OUT SILL
6" = 1'-0"



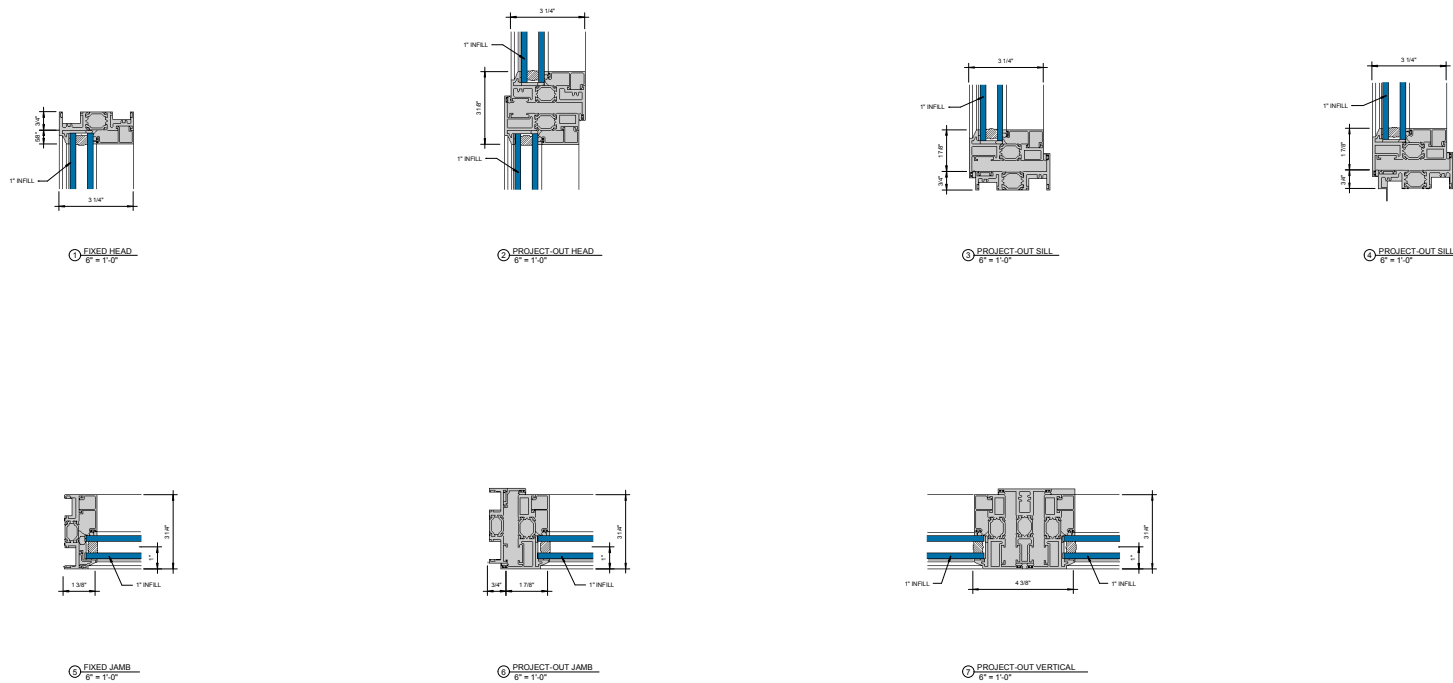
⑥ FIXED JAMB
6" = 1'-0"



⑦ PROJECT-OUT JAMB
6" = 1'-0"

Kawneer

NX-300 Series Thermal Windows 3-1/4" Depth (1" infill) - NX-380 Fixed Over NX-350 Project-Out Beside NX-350 Project-Out



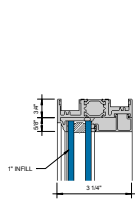
KAWNEER AN ARCONIC COMPANY

555 Guthridge Ct.
 Technology Park/Atlanta
 Norcross, GA 30092 USA
 Tel: +1 770 449 5555

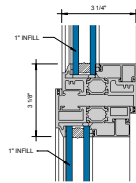


Kawneer

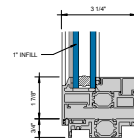
NX-300 Series Thermal Windows 3-1/4" Depth (1" infill) - NX-380 Fixed Over NX-350 Project-Out Beside NX-380 Fixed Over NX-350 Project-Out



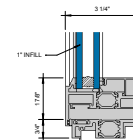
① **FIXED HEAD**
6" = 1'-0"



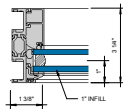
② **PROJECT-OUT HEAD**
6" = 1'-0"



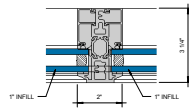
③ **PROJECT-OUT SILL**
6" = 1'-0"



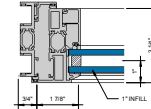
④ **PROJECT-OUT SILL**
6" = 1'-0"



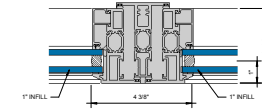
⑤ **FIXED JAMB**
6" = 1'-0"



⑥ **FIXED VERTICAL**
6" = 1'-0"



⑦ **PROJECT-OUT JAMB**
6" = 1'-0"

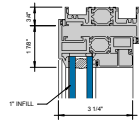


⑧ **PROJECT-OUT VERTICAL**
6" = 1'-0"

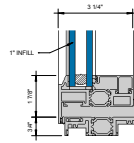
KAWNEER AN ARCONIC COMPANY

555 Guthridge Ct.
Technology Park/Atlanta
Norcross, GA 30092 USA
Tel: +1 770 449 5555

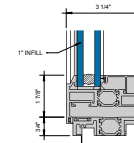




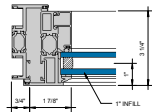
① OUTSWING HEAD
G = 1" C



② OUTSWING SILL
G = 1" C



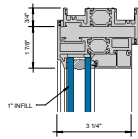
③ OUTSWING SILL
G = 1" C



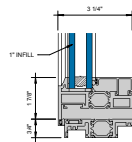
④ OUTSWING JAMB
G = 1" C

Kawneer

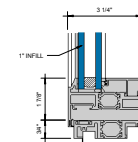
NX-300 Series Thermal Windows 3-1/4" Depth (1" infill) - NX-310 Outswing Casement Beside NX-310 Outswing Casement



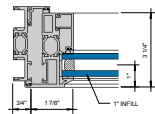
① OUTSWING HEAD
6" = 1'-0"



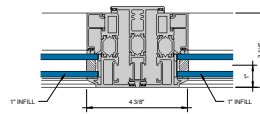
② OUTSWING SILL
6" = 1'-0"



③ OUTSWING SILL
6" = 1'-0"



④ OUTSWING JAMB
6" = 1'-0"

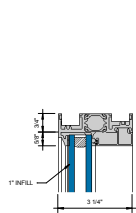


⑤ OUTSWING LOCK VERTICAL
6" = 1'-0"

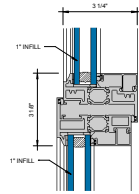
KAWNEER AN ARCONIC COMPANY

555 Guthridge Ct.
Technology Park/Atlanta
Norcross, GA 30092 USA
Tel: +1 770 449 5555

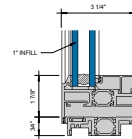




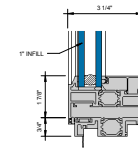
① FIXED HEAD
6" = 1'-0"



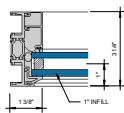
② OUTSWING HEAD
6" = 1'-0"



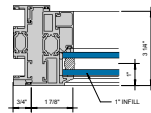
③ OUTSWING SILL
6" = 1'-0"



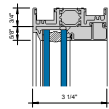
④ OUTSWING SILL
6" = 1'-0"



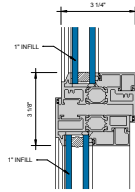
⑤ FIXED JAMB
6" = 1'-0"



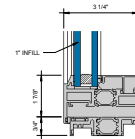
⑥ OUTSWING JAMB
6" = 1'-0"



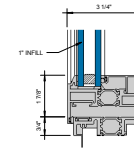
① **FIXED HEAD**
6" = 1'-0"



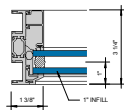
② **OUTSWING HEAD**
6" = 1'-0"



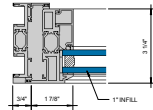
③ **OUTSWING SILL**
6" = 1'-0"



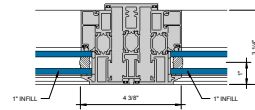
④ **OUTSWING SILL**
6" = 1'-0"



⑤ **FIXED JAMB**
6" = 1'-0"



⑥ **OUTSWING JAMB**
6" = 1'-0"

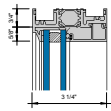


⑦ **OUTSWING VERTICAL**
6" = 1'-0"

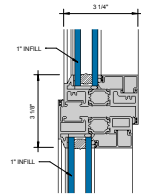
KAWNEER AN ARCONIC COMPANY

555 Guthridge Ct.
Technology Park/Atlanta
Norcross, GA 30092 USA
Tel: +1 770 449 5555

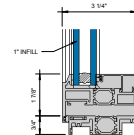
NX-300 Series Thermal Windows 3-1/4" Depth (1" infill) - NX-380 Fixed Beside NX-380 Fixed Over NX-310 Outswing Casement Beside NX-310 Outswing Casement



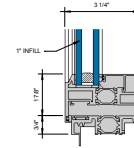
① FIXED HEAD
 6" = 1'-0"



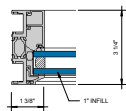
② OUTSWING HEAD
 6" = 1'-0"



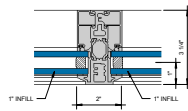
③ OUTSWING SILL
 6" = 1'-0"



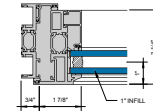
④ OUTSWING SILL
 6" = 1'-0"



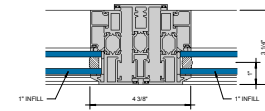
⑤ FIXED JAMB
 6" = 1'-0"



⑥ FIXED VERTICAL
 6" = 1'-0"



⑦ OUTSWING JAMB
 6" = 1'-0"



⑧ OUTSWING VERTICAL
 6" = 1'-0"

KAWNEER AN ARCONIC COMPANY

555 Guthridge Ct.
 Technology Park/Atlanta
 Norcross, GA 30092 USA
 Tel: +1 770 449 5555