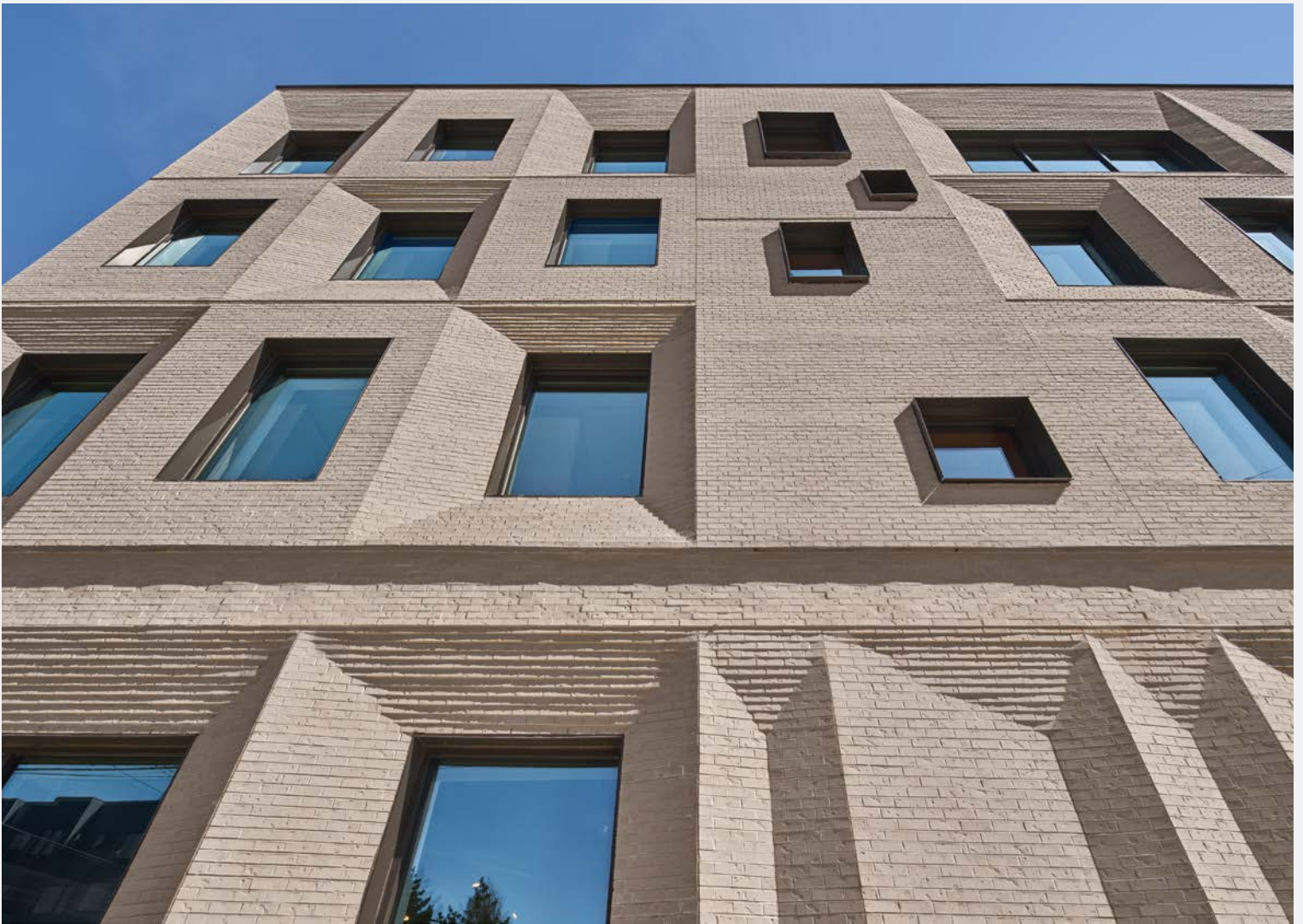


CASE STUDY

THE CLAY STUDIO PHILADELPHIA, PENNSYLVANIA





SHAPING THE ART OF MODERN DESIGN

The Clay Studio, one of the world's leading ceramic art centers, has promoted art appreciation and enjoyment since its establishment in 1974. The nonprofit educational institution's core mission is to strengthen the connection between people and the art of clay through high-quality programs and exhibitions.

In 2023, The Clay Studio relocated to a new building in the South Kensington neighborhood of Philadelphia, that utilizes a range of Kawneer architectural aluminum solutions.

Architect: DIGSAU, Philadelphia, PA
General contractor: Jeffrey M. Brown Associates, Huntingdon Valley, PA
Glazing contractor: Almond Glass Works, Inc., Camden, NJ
Photography: © 2023 Halkin Mason Photography LLC

SKILLED CRAFTWORK INSIDE AND OUT

The Clay Studio's new building is an impressive four-story structure with a rooftop terrace offering panoramic views of Philadelphia's skyline. The building spans over 37,000 square feet, with each floor precisely designed to meet the diverse needs of the studio. The building exemplifies an ideal functional and aesthetic structure that inspires its community.

Kawneer's solutions were pivotal to The Clay Studio's success and were chosen to integrate seamlessly with DIGSAU's visionary design.

The Clay Studio's new South Kensington building is a testament to how the power of art and ceramics can strengthen communities. The visually striking design by DIGSAU was brought to life with the help of Kawneer's architectural aluminum solutions and the construction expertise of Jeffrey M. Brown Associates.

The result is a stunning architectural statement that provides artists, ceramicists, designers and the local community with a hub of ceramic innovation.

Kawneer's Trifab® VersaGlaze® 601T Framing System provides increased thermal performance and value to the project while allowing ample natural light to enter the building, creating an environment conducive to artistic expression. The system was used in conjunction with the Trifab® VersaGlaze® 450 Framing System with 1-3/4" sightlines. The system's slim profile provides uninterrupted views of the surrounding area, connecting the interior with the vibrant South Kensington neighborhood, while displaying a modern appearance spanning across the facade.

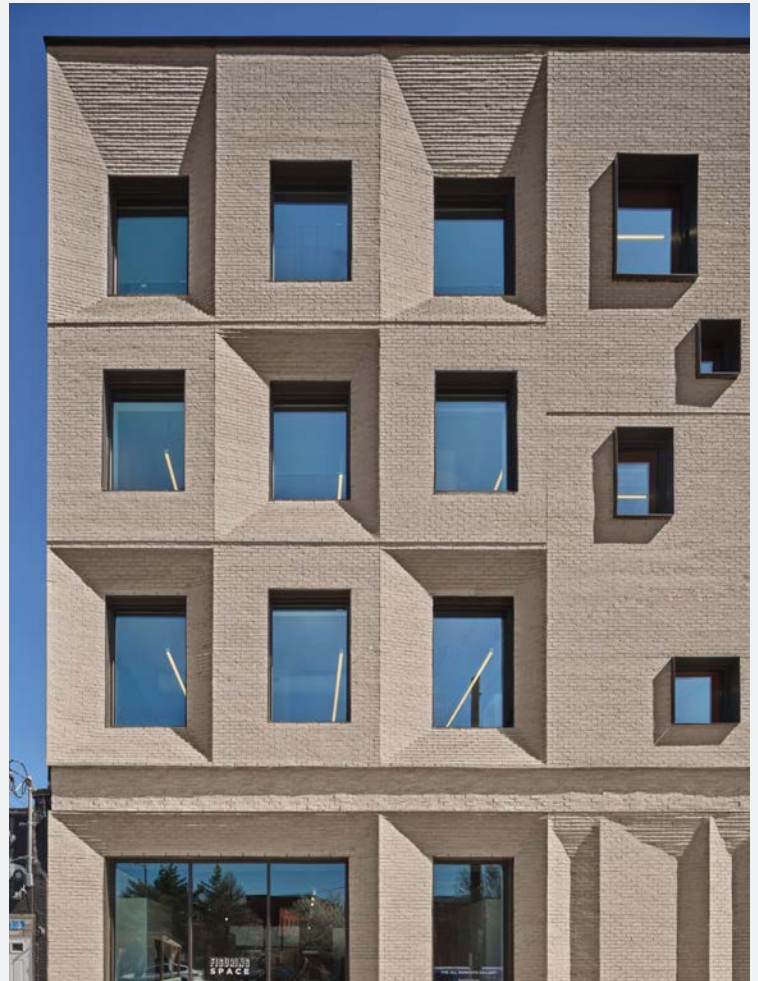
The utilization of 500 Wide Stile Entrances provides extra security and durability to withstand heavy foot traffic while maintaining a modern, sleek look to ensure a long-lasting impression.





CHALLENGES

- The primary focus was to create a space that showcased the art of ceramics and empowered creativity.
- The project had to maximize natural light to benefit occupant well-being and provide an inspiring location for creativity.
- Another focus was to maintain a visually striking design aesthetic to align with its surroundings and the material at the studio's core.
- Future-proofing the new studio was a key consideration, along with optimizing thermal performance and energy efficiency.





SOLUTIONS

- Kawneer solutions provide increased thermal performance and allowed ample natural light with the Trifab® VersaGlaze® 601T Framing System.
- Utilizing the Trifab® VersaGlaze® 450 Framing System with 1-3/4" sightline creates unobstructed views of the surroundings due to its slim profile.
- Security and accessibility and a modern and monolithic aesthetic was achieved by utilizing Kawneer's 500 Wide Stile Entrances.

PRODUCTS USED

- Trifab® VersaGlaze® 601T Framing System
- Trifab® VersaGlaze® 450 Framing System with 1-3/4" sightline
- 500 Wide Stile Entrances