



EDUCATION PRODUCT PORTFOLIO





DESIGNED AROUND SUSTAINABILITY, BUILT AROUND EVERY ABILITY

Students are shaped by their environment. That is why creating sustainable and inspiring learning facilities is an important building block for their future success.

As a global leader in architectural aluminum solutions, Kawneer has an extensive product portfolio designed to protect, improve and optimize the efficiency of schools. From thermal performance and acoustics, to lighting and reduced glare, our innovative solutions are proven to advance learning. Education has always been the cornerstone of our business. Kawneer systems offer the perfect balance of natural heat and light, durability and uninterrupted views.

Our market-leading product range maximizes the benefits of using aluminum systems and inspires architects, Energy Service Companies (ESCOs) and schools to build a more sustainable future.



BUILDING LEGACIES THAT INSPIRE FUTURE GENERATIONS

PRODUCTS

350/500 Heavy Wall™ Entrances
1600 Wall System®1 Curtain Wall
1600 Wall System®2 Curtain Wall

AT A GLANCE

Our 350/500 Heavy Wall™ offer -long-lasting quality and durability. It has been designed to be used in high-traffic areas, such as schools, offices and universities.

Kawneer's 1600 Wall System®1 Curtain Wall / 1600 Wall System®2 Curtain Wall systems are stick fabricated, pressure glazed curtain wall for low to mid-rise applications.

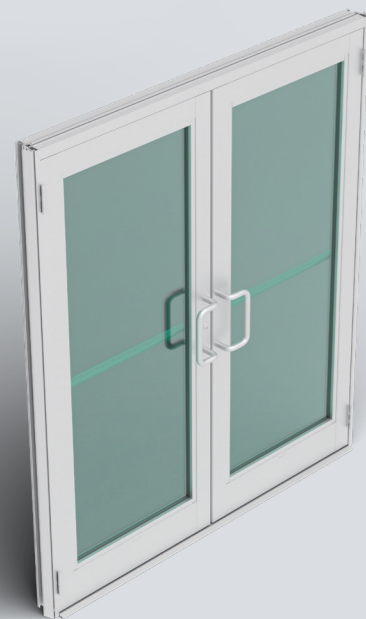
THE PRODUCT IN PLACE

Johnson Middle School is one of the largest net-zero energy public schools in North America. Opened ahead of the 2011 academic year, the school is powered by renewable energy sources, such as wind, solar and geothermal.

Accommodating approximately 900 students, Johnson Middle School is designed to provide as much energy on-site as it uses over the course of a year, with the building receiving LEED® certification thanks to its renewable credentials.

The environmentally friendly Kawneer 350/500 Heavy Wall™ Entrances and 1600 Curtain Wall systems were installed to improve thermal insulation and on-site durability, and the school also features Kawneer's light shelves and frames.

By investing in renewable energy sources and our sustainable products, the school's energy costs are roughly 70% lower than a traditional K-12 facility.



350/500 HEAVY WALL™ ENTRANCES

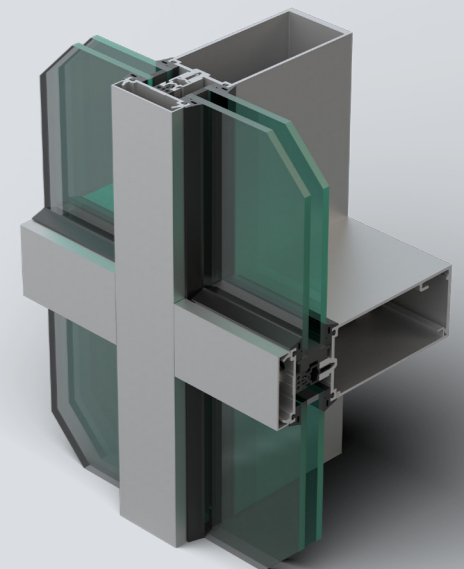
Key benefits

- High thermal performance
- Blast mitigation, hurricane resistance
- Moderate to high traffic applications

1600 WALL SYSTEM®1 CURTAIN WALL 1600 WALL SYSTEM®2 CURTAIN WALL

Key benefits

- 2-1/2" (63.5mm) sightline
- 6" (152.4mm), 7-1/2" (190.5mm) or 10-1/2" (267mm) depth
- Thermal performance
- Low to mid rise applications
- Blast mitigation, hurricane resistance



Fayetteville High School Phase II,
Fayetteville, Arkansas



SHAPING THE FUTURE OF EDUCATION

PRODUCT

Trifab® VersaGlaze® 451 Framing System

AT A GLANCE

Trifab® VersaGlaze® is built on the proven and successful Trifab® platform – with all the versatility its name implies, it is designed for the most demanding thermal performance and employs a dual Isolock® thermal break.

THE PRODUCT IN PLACE

Accommodating the diverse needs of an ever-increasing student body, Fayetteville High School was rebuilt from the ground up to create bright, innovative learning spaces.

With seamless incorporation of Kawneer entrances and framing systems, the Trifab® VersaGlaze® 451 Framing System complements the open floor plan and increases the natural light spread throughout the renovated building.

The school's interior is illuminated by 28,000 square feet of curtain wall and 14,000 square feet of storefront glass, providing an open and airy design that engages students and empowers teachers.

The pioneering project unifies Fayetteville High School's many facilities, creating a new identity and public interface, while LEED Gold® certification was achieved using sustainable products.



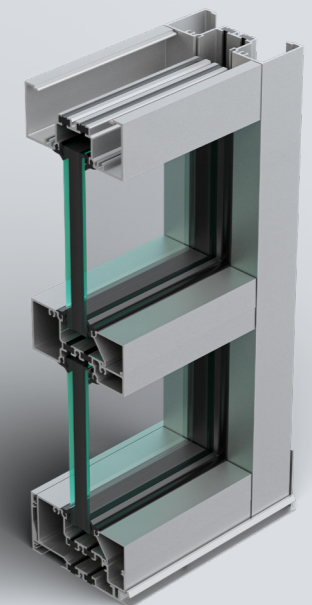
TRIFAB® VERSAGLAZE® 451/451T FRAMING SYSTEM

Key benefits

- Ultra thermal, high thermal or non-thermal performance
- Center and front-glazed
- Hurricane resistance on center-glazed Trifab® 451 Framing System

Other products used

- 350 Medium Stile Entrances
- Trifab® VersaGlaze® 451 Framing System
- 3-1/4" Overlap Projected Thermal Windows (Project Out)
- 3-1/4" Fixed Thermal Windows



A SHINING LIGHT FOR SUSTAINABLE LEARNING

PRODUCT

InLighten® Interior Light Shelf

AT A GLANCE

The InLighten® Interior Light Shelf leverages minimal material content, sightlines, weight, installation and maintenance efforts, all while maximizing value, daylighting and design options.

THE PRODUCT IN PLACE

The ability to attach the InLighten® Interior Light Shelf to multiple Kawneer curtain wall and storefront framing systems makes it a perfect match for either new or retrofit projects.

One of the most important aspects of a holistic school building is high-quality daylighting. In fact, the World Green Building Council reports that in classrooms with good daylight, students attain 5% to 14% higher scores on tests and learn 20% to 25% faster than kids who work in windowless spaces.

At the Torah Academy in Metairie, Louisiana, our light shelf reflects sunlight up to the ceiling and deeper into the building. Available as a translucent polycarbonate or opaque aluminum composite panel, this flexible and versatile solution helps reduce the need for artificial lighting and increases energy savings.

The InLighten® Interior Light Shelf features an extruded aluminum chassis system and offers several panel choices. With depths of up to 30" (762mm), you can maximize the overall reflective surface area, while the minimalist design also incorporates a tilt feature for easy cleaning of the top reflective panel.

Torah Academy
Metairie, Louisiana



INLIGHTEN® INTERIOR LIGHT SHELF

Key benefits

- Variable depths up to 30" (762mm)
- Tilt feature for easy cleaning of reflective surface
- Compatible with curtain wall and storefront framing
- Translucent polycarbonate or opaque aluminum composite (ACM) panel options
- Potential Leadership in Energy and Environmental Design (LEED) credits



Georgia Gwinnett College
Library and Learning Center
Lawrenceville, Georgia



UTILIZING NATURAL LIGHT IN EDUCATIONAL BUILDINGS

PRODUCT

Versoleil® SunShades

AT A GLANCE

The Versoleil® SunShade Outrigger System allows architects and designers to mix and match components, while maintaining an aesthetic consistency between a building's curtain wall and storefront.

THE PRODUCT IN PLACE

Georgia Gwinnett College's state-of-the-art library and learning center is designed to serve as the intellectual hub of the 8,000-student campus.

Kawneer worked with project designers, LEO A DALY, to integrate the daylight required for learning into a structure that effectively shields the library's delicate archival collection from environmental factors. 36" deep 1600 SunShades® provided an ideal solution for this vital task of preservation.

Trifab® VersaGlaze® 450 Framing System was used in the interior of the building to increase visibility and allow natural light to extend throughout the library and learning space.

Natural light was further enhanced with the use of 1600 Wall System®1 Curtain Wall and 1600 Wall System®2 Curtain, improving the transparency of the building envelope.

Installing a waterproofing membrane ensured a watertight building that functions both aesthetically and practically, keeping students dry and insulated as the weather changes.

The LEED Gold®-certified structure empowers students to exceed their potential through the proven benefits of natural light and uninterrupted views of the outside world, while the contents of the library are preserved.



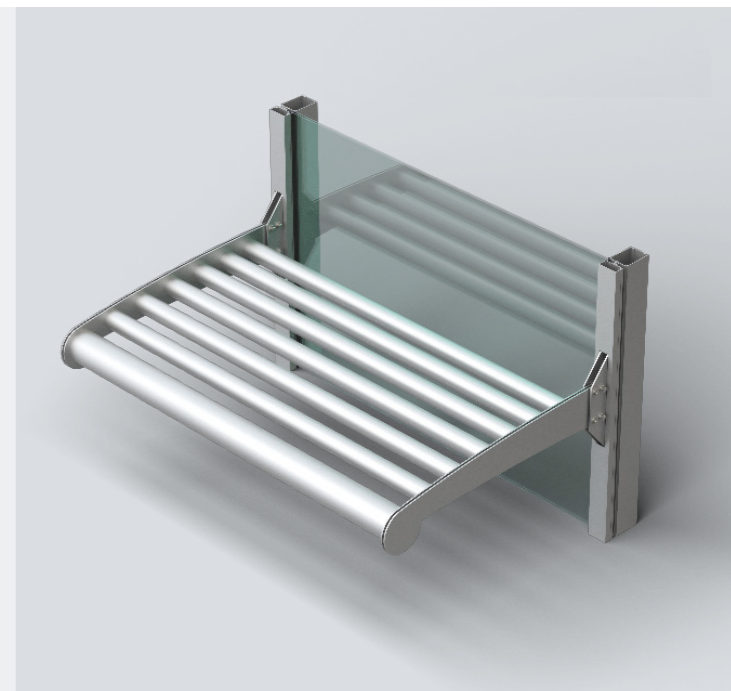
VERSOLEIL® SUNSHADES

Key benefits

- 30" (762mm) or 36" (914.4mm) depths
- Compatible with curtain wall
- Single blade and storefront options also available
- Variable blade options
- Potential Leadership in Energy and Environmental Design (LEED) credits

Other products used

- 1600 Wall System®1 Curtain Wall
- 350 Medium Stile Entrances with Paneline® Exit Devices
- Custom vertical sunshade built from 190 Narrow Stile Entrance door rail
- 2000 Skylight
- Trifab® VersaGlaze® 451T Storefront Framing



REDUCING ENERGY, COST AND IMPACT

Able to deliver engineered solutions for any new build or modernization project, Kawneer has gained an enviable track record in the Education sector. A single-source supplier, we can offer efficient lead times, while ensuring that our systems remain competitive in the marketplace, and all products come complete with a range of warranties.

We use 40% recycled aluminum content and our products can often last longer than other materials. We are also committed to providing product transparency through a range of industry standards, including Environmental Product Declarations (EPDs), Kawneer Material Transparency Summaries (MTS), the Cradle to Cradle Certified® Products Program and Declare labels.



Johnson Middle School,
Irving, Texas



PRODUCTS SHAPED BY A NATURAL LEARNING ENVIRONMENT

To discover how architectural aluminum products can transform your next education project, get in touch with your Kawneer sales representative today.

To find out more, visit: kawneer.us/k-12/