



Photo credits: © Don Pearse



# RETAIL & NATIONAL ACCOUNTS PORTFOLIO

# PIONEERING RETAIL SOLUTIONS SINCE 1906

As pioneers in manufacturing architectural aluminum framing systems for over 100 years, our industry-leading products help companies, architects and customers create distinctive buildings across the retail sector.

Versatile and lightweight, yet incredibly strong, aluminum is perfect for shaping distinctive retail designs. Our commercial framing storefront solutions allow an abundance of natural light to pass through, enhancing promotional displays and creating bright, open spaces that elevate the brand and allow retail spaces to flourish.



# BUILDING LEGACIES BY BUILDING BRANDS

Kawneer’s national accounts professionals help brands maintain their image across multiple locations. When partnering with Kawneer on a national account, a discovery session takes place to understand the client’s needs prior to proposing design, product and style consistency.

Working closely with our clients, our national accounts professionals work to maintain contact on a regular basis and respond quickly to anything that needs their attention.

Providing a premium service, we guide our partners throughout the process, offering a one-stop-shop service with one point of contact. Kawneer’s dedicated team of professionals is here to guide you, providing price and brand consistency to clients who have multiple retail outlets across various locations.

# FOCUS ON SUSTAINABILITY

Kawneer is committed to minimizing our environmental impact. We use a minimum of 40% recycled content in our products and monitor the impact of every product's lifecycle.

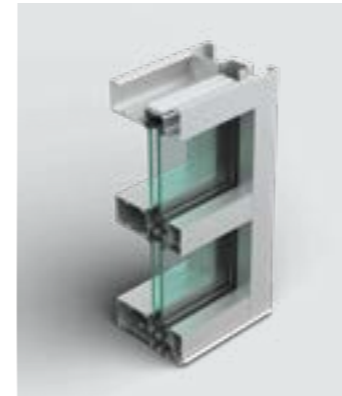
We provide product transparency to architects and designers. From our Environmental Product Declarations (EPDs) and Kawneer Material Transparency Summaries (MTS) to the Cradle to Cradle Certified® Products Program and Declare labels, we care about how our products impact retail spaces for generations to come. Our company has worked to lower our carbon footprint over the last six years.

We continue to engineer value-added solutions for the retail sector and enable architects and designers to create sustainable buildings that reduce energy, cost and environmental impact.



# FRAMING A RETAIL EXPERIENCE

Learn how our extensive range of aluminum systems can be utilized in retail settings.



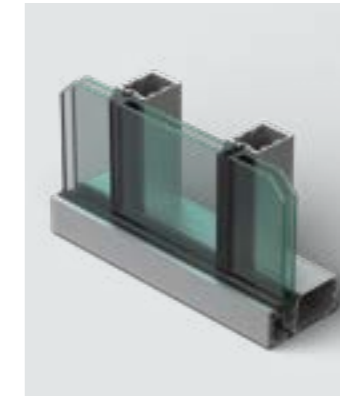
**Trifab® VersaGlaze®  
601/601T/601UT  
Framing System**

Designed to add increased thermal performance and value while accommodating higher spans with its 6" depth.



**190/350/500 Standard  
Entrances**

Engineered, constructed and tested to make good first impressions while withstanding the rigors of constant use.



**Trifab® VersaGlaze®  
451/451T Framing  
System**

Designed for long-lasting performance and unmatched fabrication flexibility.



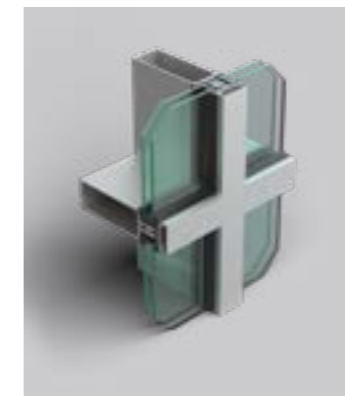
**250T/350T/500T  
Insulpour® Thermal  
Entrances**

Features innovative IsoPour™ technology and provides superior thermal performance for a range of applications.



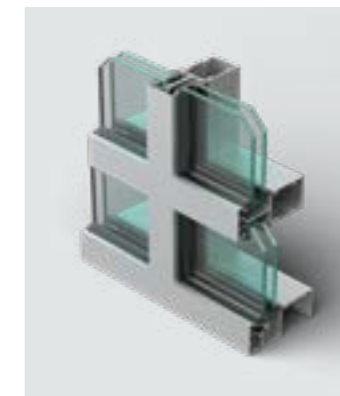
**Versoleil® Sunshade –  
Outrigger System – for  
Storefront**

Provides distinct aesthetics, versatility, maximum shading and energy savings.



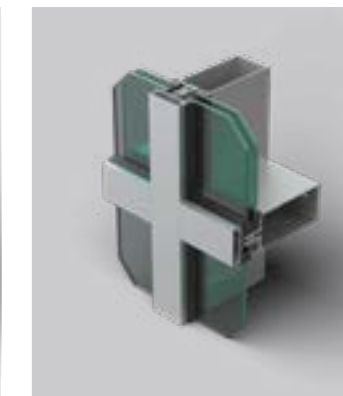
**1620/1620 SSG Curtain  
Wall System**

Provides an attractive, versatile and cost-effective solution for low- to mid-rise applications in a narrow site line versus traditional curtain wall.



**EnCORE® Framing  
System**

Offers thermal economy, a structural silicone glazing (SSG) option and numerous design choices.



**1600 Wall System®1  
Curtain Wall**

Designed for low- to mid-rise applications and is hurricane and impact resistant.



## BRINGING THE CHIPOTLE BRAND TO THE FOREFRONT

### FEATURED PRODUCTS

- Trifab® VersaGlaze® 451/451T Framing System
- 350/500 Standard Entrances

### AT A GLANCE

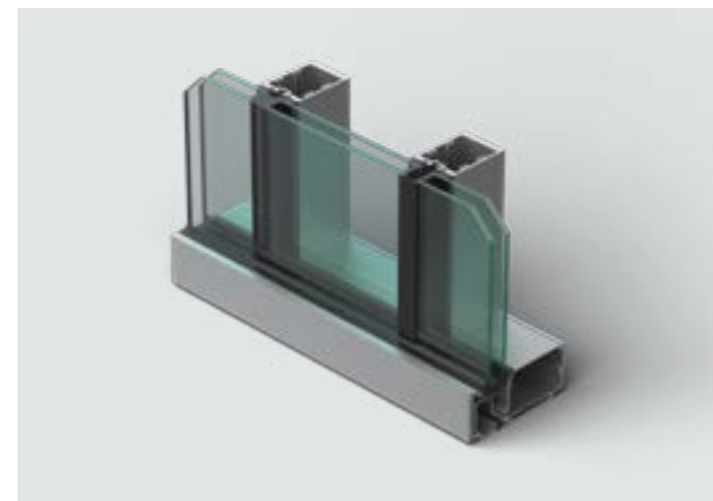
Kawneer began working with Chipotle in 2016, collaborating from early stages of design to create a distinct store identity. This has evolved into a partnership aimed at delivering a consistent visual appearance for new restaurant locations across North America. We provide companies like Chipotle with estimating, product selection, building and design assistance, all through one dedicated point of contact.

The versatile Trifab® VersaGlaze® 451/451T Framing System is featured on Chipotle restaurants across the country, using customized finishes to match the brand's identity, regardless of a restaurant's size or whether it was a standalone unit.

### THE PRODUCTS IN PLACE

Designed for performance and unmatched fabrication flexibility, the Trifab® VersaGlaze® 451/451T Framing System can be used on almost any project and offers a pre-glaze option for the existing center set screw spline assembly application, available on non-thermal, thermal and ultra-thermal frame types. Pre-glaze units can be completely fabricated and glazed in the shop, minimizing job-site costs and enhancing quality.

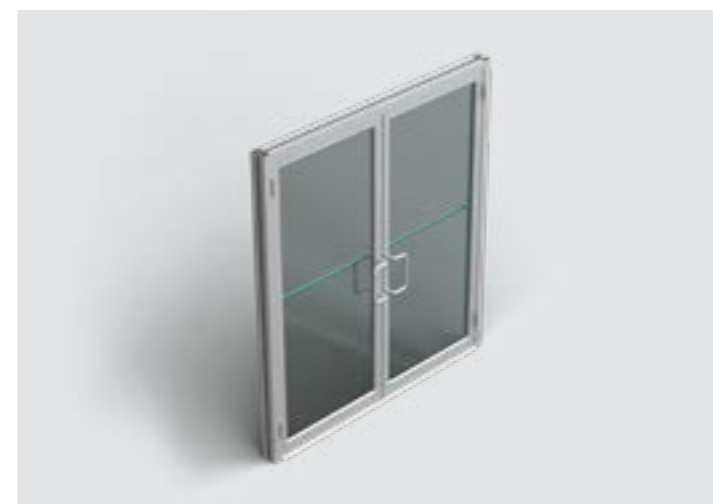
Kawneer's 350/500 Standard Entrances are engineered, constructed and tested to make good first impressions while withstanding the rigors of constant use by customers.



### TRIFAB® VERSAGLAZE® 451/451T FRAMING SYSTEM

#### Key benefits

- 2" (50.8mm) sightline
- 4-1/2" (114.3mm) depth
- High-thermal performance
- Front, center, back or multi-plane glass applications
- Blast mitigation (451T), hurricane resistance
- Structural silicone glazed (SSG) options, pre-glazed options



### 350/500 STANDARD ENTRANCES

#### Key benefits

- 2-1/8" (54mm), 3-1/2" (87.9mm) or 5" (127mm) sightline
- 1-3/4" (44.5mm) depth
- Non-thermal performance
- Moderate- to high-traffic application



# DELIVERING BRAND CONSISTENCY AND PERFORMANCE FOR DICK'S SPORTING GOODS

## FEATURED PRODUCTS

- 1600UT System™1 Curtain Wall
- Trifab® VersaGlaze®451/451T Framing System

## AT A GLANCE

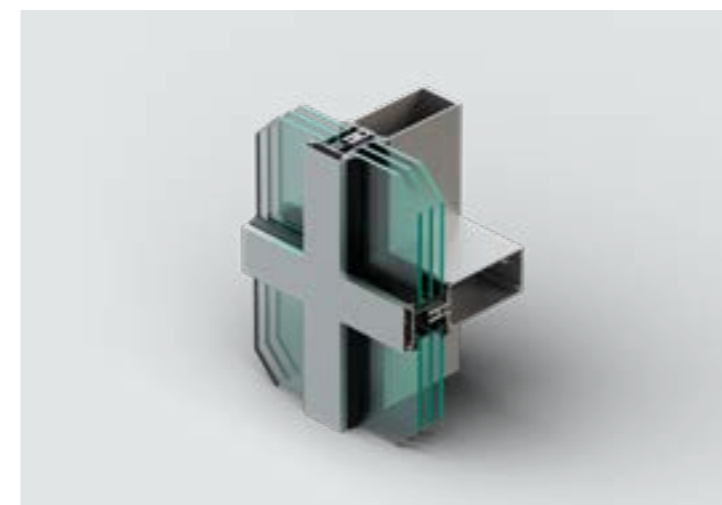
As DICK'S Sporting Goods expands its presence across the country, it aims to create stores that are beautiful, functional and consistent in appearance. Kawneer was selected to provide products that deliver the same design and performance solution for all DICK'S Sporting Goods locations across the United States.

To create stores that combine beauty and function, the design for DICK'S Sporting Goods features large expanses of glass for displays and natural lighting provided by our 1600UT System™1 Curtain Wall and Trifab® VersaGlaze® 451T Framing System.

## THE PRODUCTS IN PLACE

The 1600UT System™1 Curtain Wall delivers ultra-thermal performance, versatility and reliability and is ideal for low- to mid-rise applications.

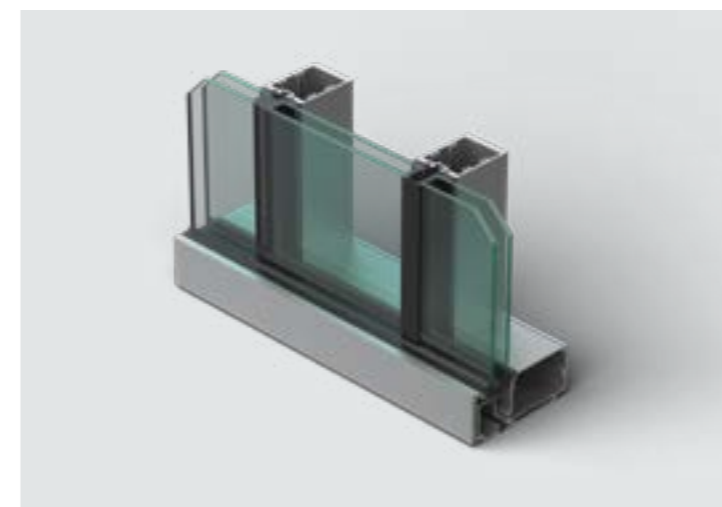
Kawneer's Trifab® VersaGlaze® 451T Framing System delivers versatility, aesthetics and high functionality. With four glazing applications and multiple infill choices, installation is made easy.



## 1600UT SYSTEM™1 CURTAIN WALL

### Key benefits

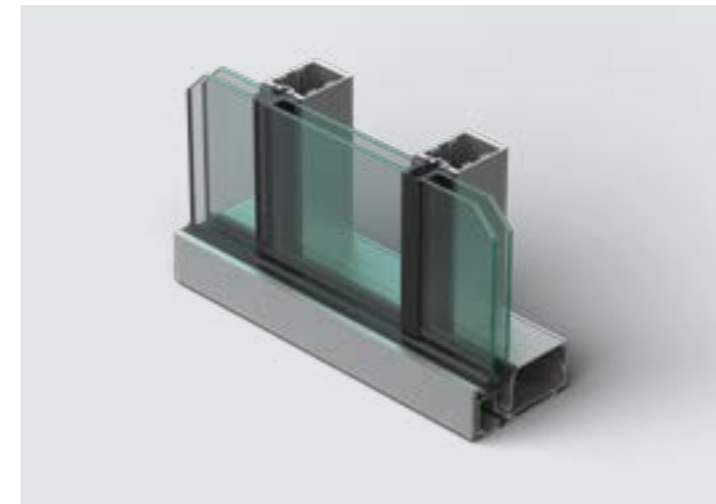
- 2-1/2" (63.5mm) sightline
- 6" (152.4mm), 7-1/2" (190.5mm) or 10-1/2" (266.7mm) system depth with 1" double-pane infill
- 6-3/4" (171.5mm), 8-1/4" (209.6mm) or 11-1/4" (285.8mm) system depth for triple-pane 1-3/4" (44.5mm) infill



## TRIFAB® VERSAGLAZE® 451/451T FRAMING SYSTEM

### Key benefits

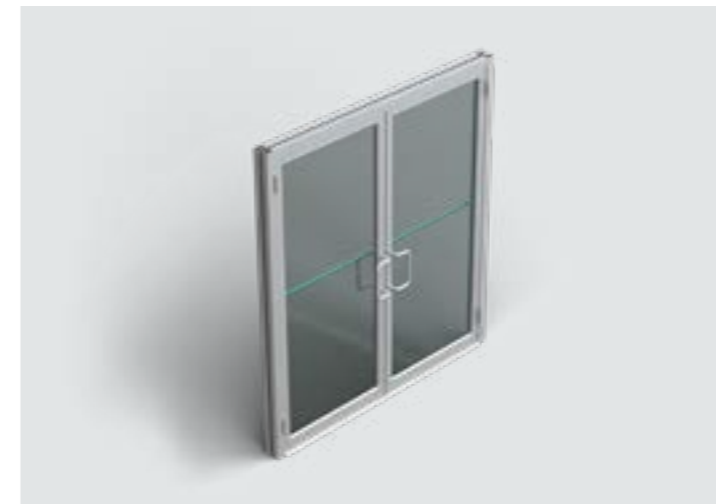
- 2" (50.8mm) sightline
- 4-1/2" (114.3mm) depth
- High-thermal performance
- Front, center, back or multi-plane glass applications
- Blast mitigation (451T), hurricane resistance
- Structural silicone glazed (SSG) options, pre-glazed options



#### TRIFAB® VERSAGLAZE® 451/451T FRAMING SYSTEM

##### Key benefits

- 2" (50.8mm) sightline
- 4-1/2" (114.3mm) depth
- High-thermal performance
- Front, center, back or multi-plane glass applications
- Blast mitigation (451T), hurricane resistance
- Structural silicone glazed (SSG) options, pre-glazed options



#### 190/350/500 STANDARD ENTRANCES

##### Key benefits

- 2-1/8" (54mm), 3-1/2" (87.9mm) or 5" (127mm) sightline
- 1-3/4" (44.5mm) depth
- Non-thermal performance
- Moderate- to high-traffic application

## MAKING AN ENTRANCE WITH RAISING CANE'S

#### FEATURED PRODUCTS

- Trifab® VersaGlaze® 451/451T Framing System
- 300/500 Standard Entrances

#### AT A GLANCE

The Raising Cane's location in El Paso, Texas, features Kawneer's 500 Wide Stile Entrances and Trifab® VersaGlaze® 451 Framing System.

Raising Cane's is a Baton Rouge, LA-based restaurant company known for its fried chicken, quick service and active community involvement. With a vision to open locations across the United States, the fast-growing chain needs to stay consistent and true to its corporate branding and design. Kawneer's national accounts team helps deliver a consistent visual appearance for Raising Cane's restaurant locations by providing a full-service offering, including product and finish consistency and design assistance throughout the entire process from ideation to completion.

Kawneer's national accounts professionals provide companies like Raising Cane's with estimating, product selection, building and design assistance, all through one dedicated point of contact.

#### THE PRODUCTS IN PLACE

The Trifab® VersaGlaze® 451 Framing System delivers versatility, aesthetics and high functionality for a wide range of applications.

Kawneer's 500 Wide Stile Entrances create a monumental visual statement and provide superior strength for buildings experiencing heavy foot traffic.





To discover how Kawneer's architectural aluminum solutions can transform your next retail project, get in touch with your architectural sales representative today.

To find out more, visit: [kawneer.us/retail](https://www.kawneer.us/retail)