

# SNAP TRIM AND CLIPS

## Architectural Detail Manual

August, 2019

ADME170EN



This page is intentionally left blank.

## Table of Contents

Contacting Kawneer .....	5
Conventions Used in this Document .....	5
Metric Conversion .....	5
Two-Piece Extruded Aluminum Snap Trim .....	6
Interior Snap Trim .....	7
Rectangular .....	8
Rectangular Offset .....	10
Historic Contour .....	11
Offset Miscellaneous .....	14
Extended Leg .....	15
Offset and Miscellaneous .....	17
Miscellaneous .....	20
Special .....	21
Notes and Disclaimers .....	24

---




This page is intentionally left blank.

## Contacting Kawneer

For contact information, visit [kawneer.com](http://kawneer.com).

## Conventions Used In This Document

These symbols identify special types of information that can help you use the document more effectively.

Symbol	Description
 <b>NOTE</b>	Denotes general information that provides additional context or guidance
 <b>IMPORTANT</b>	Denotes information to which you should pay special attention
 <b>TIP</b>	Denotes information that can help you perform a task more efficiently

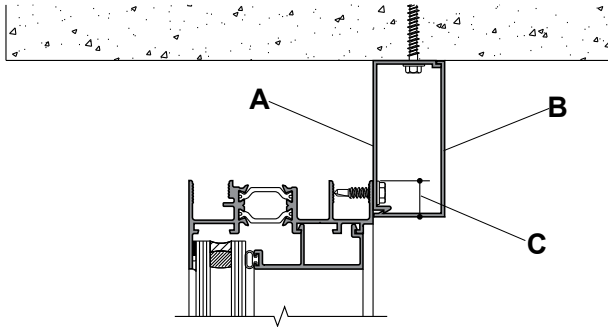
## Metric Conversion

Metric (SI) conversion figures are included throughout these details for reference. Numbers in parentheses ( ) are millimeters unless otherwise noted. The following metric (SI) units are found in these details:

m	meter
cm	centimeter
mm	millimeter
Pa	pascal
MPa	megapascal

## Two-Piece Extruded Aluminum Snap Trim

### Typical Head Snap Trim Section (Rectangular)



A	Snap trim clip, mill finish, 4" pieces or continuous.
B	Snap trim cover (rectangular or historic/contour, finished to match window, oversized for field trimming).
C	5/8" (15.9) ideal overlap.

Function	Benefit
Anchor the new window to the existing construction.	Provide multiple anchor locations at 6" (152.4) from each end and 18" (457.2) O.C. maximum.
Cover the interior perimeter between the new window and the existing construction.	Conceal the anchors and reduce air infiltration for heating and cooling savings.

### Suggested Installation Procedure (wrap around panning overview only)

1. Apply the first four trim clips to existing construction - two at top and bottom of each jamb.
2. Check for plumb and adjust the clips as required.
3. Place the window with panning into the opening and secure the window to the clips.
4. Check and adjust the window for square and level, and apply the remaining clips.
5. Field-trim the snap trim cover (horizontals run full width) and snap them onto clips.



### IMPORTANT

To assist with accessory selection and field labor calculations:

- **5/8" ideal overlap.** If the trim overlaps the window too little, there may not be enough screw thread engagement; if too much, the hung tilt sash may not tilt in properly.
- **Automatic sill locks.** Some hung windows have a sill protrusion which may require extra field notching of vertical snap trim covers so they will snap onto the trim clips.
- **Historic trim.** These special profiles require extra field notching so the corners will come together. Miter-cutting the snap trim covers is awkward under field conditions.
- **Trim clip length.** Careful analysis of field conditions will help in the decision whether to order 4" pieces or continuous trim clip; both choices have advantages.

## Interior Snap Trim

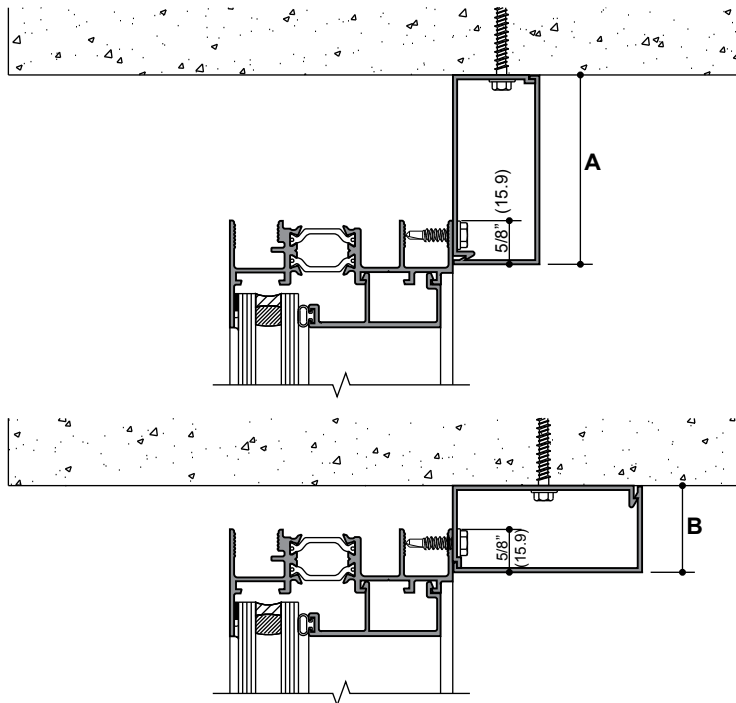
A combination of exterior panning and interior snap trim is normally required to completely cover existing building conditions and finish the interior face of the window. Standard interior snap trim profiles are available to accommodate most building conditions. Historic or custom snap trim profiles may be supplied based upon project specific requirements. Please contact your Kawneer representative for detailed assistance and associated costs.

- Interior snap trim may be used to securely anchor windows into building openings. Fasteners for trim-to-window and trim-to-surrounding conditions are supplied by others.
- Windows are securely anchored to the building condition with anchors installed through the window frame, strap anchors or interior snap trim.
- Ideal trim clip overlap onto new window is 5/8" (15.9). Varying more than 1/8" (3.2) from this overlap may lead to window operation and anchoring difficulties.
- Interior snap trim is finished to match window and square cut 3" (76.2) over window size for final field fitting. Clips are mill finish, without holes and 4" (101.6) long (continuous clip available upon request).



### IMPORTANT

When ordering, please provide trim # & orientation, "long side" or "short side" against window.



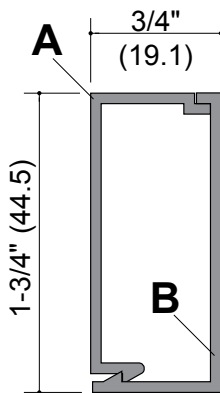
A	"LONG SIDE"
B	"SHORT SIDE"

## Rectangular

See index below for more sizes.

### #30 TRIM

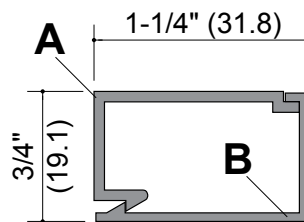
#30 TRIM & #30 CLIP



A	CLIP S-1543
B	TRIM S-1542

### #5 TRIM

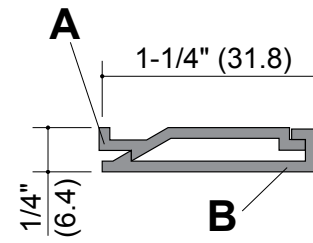
#5 TRIM & #5 CLIP



A	CLIP S-018
B	TRIM S-017

### #65 TRIM

#65 TRIM & #65 CLIP



A	CLIP S-2559
B	TRIM S-2558

WIDTH	HEIGHT	TRIM#	TRIM DIE#	CLIP DIE#
3/4" (19.1)	1-3/4" (44.5)	30	S-1542	S-1543
3/4" (19.1)	2-1/4" (57.2)	31	S-1544	S-1545
3/4" (19.1)	2-3/4" (69.9)	24	S-1348	S-1349
3/4" (19.1)	3-1/4" (82.6)	32	S-1546	S-1547
3/4" (19.1)	4" (101.6)	16	S-358	S-359
1" (25.4)	1" (25.4)	124	S-10424	S-10425
1" (25.4)	1-1/2" (38.1)	125	S-10426	S-10538
1" (25.4)	1-3/4" (44.5)	34	S-1619	S-1620
1" (25.4)	2" (50.8)	123	S-10419	S-10420
1" (25.4)	2-1/2" (63.5)	14	S-147	S-148
1" (25.4)	3" (76.2)	130	S-10547	S-10548
1" (25.4)	3-1/2" (88.9)	126	S-10539	S-10540
1" (25.4)	4" (101.6)	57	S-2249	S-2250
1" (25.4)	5" (127)	132	S-10551	S-10552

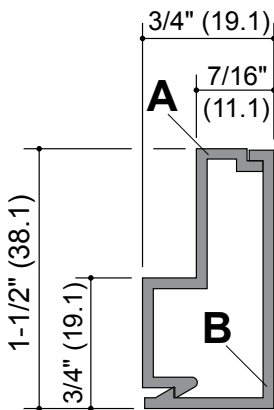


WIDTH	HEIGHT	TRIM#	TRIM DIE#	CLIP DIE#
1-1/4" (31.8)	1/4" (6.4)	65	S-2558	S-2559
1-1/4" (31.8)	1/2" (12.7)	64	S-2556	S-2557
1-1/4" (31.8)	3/4" (19.1)	5	S-017	S-018
1-1/4" (31.8)	1" (25.4)	36	S-1649	S-1648
1-1/4" (31.8)	1-1/4" (31.8)	4	S-015	S-016
1-1/4" (31.8)	1-3/4" (44.5)	6	S-019	S-020
1-1/4" (31.8)	1-3/4" (44.5)	6HD-BASE	S-019	S-10445
1-1/4" (31.8)	2" (50.8)	48A	S-1945	S-2030
1-1/4" (31.8)	2-1/4" (57.2)	3	S-013	S-014
1-1/4" (31.8)	2-3/4" (69.9)	7	S-021	S-022
1-1/4" (31.8)	3-1/4" (82.6)	33	S-1548	S-1549
1-1/4" (31.8)	4" (101.6)	27	S-1389	S-1390
1-3/8" (34.9)	3-1/4" (82.6)	28	S-1534	S-1545
1-1/2" (38.1)	1-1/2" (38.1)	127	S-10541	S-10542
1-1/2" (38.1)	2" (50.8)	2	S-1218	S-1253
1-1/2" (38.1)	2-1/2" (63.5)	44A	S-1824	S-1823
1-3/4" (44.5)	1-1/4" (31.8)	47	S-1907	S-1908
1-3/4" (44.5)	3-1/4" (82.6)	22	S-1265	S-1266
1-3/4" (44.5)	4" (101.6)	21	S-980	S-090
1-3/4" (44.5)	4-1/2" (114.3)	81	S-3081	S-3082
1-3/4" (44.5)	4-3/4" (120.7)	79	S-3083	S-3084
2" (50.8)	2" (50.8)	131	S-10549	S-10550
2-1/4" (57.2)	2" (50.8)	9	S-089	S-088
2-3/4" (69.9)	1-1/2" (38.1)	39	S-1697	S-1695
3-1/4" (82.6)	2-1/2" (63.5)	113	S-4974	S-4975

## Rectangular Offset

### #52 TRIM

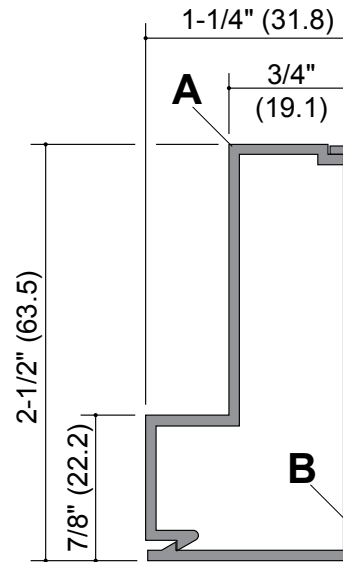
#52 TRIM & #52 CLIP



A	CLIP S-2079
B	TRIM S-2078

### #49 TRIM

#49 TRIM & #49 CLIP



A	CLIP S-1948
B	TRIM S-1947

See index below for more sizes.

WIDTH	WIDTH OFFSET	HEIGHT	HEIGHT OFFSET	TRIM#	TRIM DIE#	CLIP DIE#
3/4" (19.1)	7/16" (11.1)	1-1/2" (38.1)	3/4" (19.1)	52	S-2078	S-2079
3/4" (19.1)	7/16" (11.1)	1-3/4" (44.5)	3/4" (19.1)	30A	S-1542	S-2015
3/4" (19.1)	3/8" (9.5)	2-3/4" (69.9)	1" (25.4)	24A	S-1348	S-2023
1" (25.4)	3/4" (19.1)	1-1/4" (31.8)	9/16" (14.3)	51	S-2016	S-2017
1-1/4" (31.8)	3/4" (19.1)	3/4" (19.1)	13/32" (10.3)	61	S-017	S-2548
1-1/4" (31.8)	9/16" (14.3)	1-1/4" (31.8)	1" (25.4)	4M	S-015	S-1949
1-1/4" (31.8)	3/4" (19.1)	1-1/4" (31.8)	9/16" (14.3)	4A	S-015	S-1981
1-1/4" (31.8)	3/4" (19.1)	1-3/4" (44.5)	3/4" (19.1)	6B	S-019	S-248
1-1/4" (31.8)	7/8" (22.2)	1-3/4" (44.5)	3/4" (19.1)	6M	S-019	S-2074
1-1/4" (31.8)	7/8" (22.2)	1-3/4" (44.5)	15/16" (23.8)	6C	S-019	S-2077
1-1/4" (31.8)	1" (25.4)	1-3/4" (44.5)	1-1/8" (28.6)	6A	S-019	S-1219
1-1/4" (31.8)	13/16" (20.6)	2" (50.8)	3/4" (19.1)	48	S-1945	S-1946
1-1/4" (31.8)	1" (25.4)	2-1/4" (57.2)	5/8" (15.9)	3M	S-013	S-1968
1-1/4" (31.8)	1/2" (12.7)	2-1/4" (57.2)	1-1/8" (28.6)	110	S-4909	S-4910
1-1/4" (31.8)	3/4" (19.1)	2-1/2" (63.5)	5/8" (15.9)	49	S-1947	S-1948

WIDTH	WIDTH OFFSET	HEIGHT	HEIGHT OFFSET	TRIM#	TRIM DIE#	CLIP DIE#
1-1/2" (38.1)	1" (25.4)	1-1/4" (31.8)	3/4" (19.1)	63	S-2553	S-2554
1-1/2" (38.1)	3/4" (19.1)	2-1/2" (63.5)	1" (25.4)	44	S-1824	S-1825
1-1/2" (38.1)	1/2" (12.7)	2" (50.8)	1" (25.4)	2M	S-1218	S-1969
1-3/4" (44.5)	1" (25.4)	2-1/4" (57.2)	3/4" (19.1)	46	S-1853	S-1854
1-3/4" (44.5)	11/16" (17.5)	2-1/4" (57.2)	1/4" (6.4)	107	S-4635	S-4626
2-1/4" (57.2)	13/16" (20.6)	2" (50.8)	7/8" (22.2)	66	S-089	S-2619

## Historic Contour

### #23 TRIM

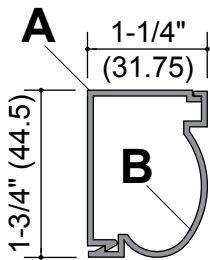
#23 TRIM & #6 CLIP

### #11 TRIM

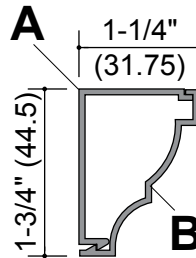
#11 TRIM & #6 CLIP

### #17 TRIM

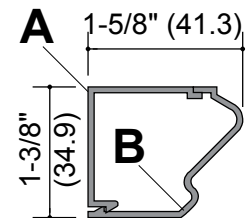
#17 TRIM & #17 CLIP



A	CLIP S-020
B	TRIM S-1341



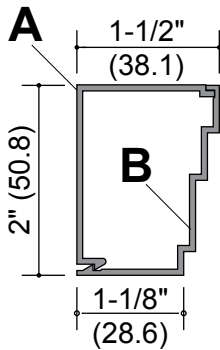
A	CLIP S-020
B	TRIM S-098



A	CLIP S-295
B	TRIM S-294

**#2A TRIM**

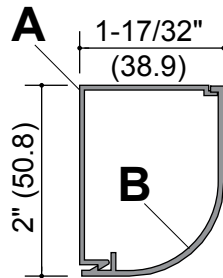
#2A TRIM & #2 CLIP



A	CLIP S-1253
B	TRIM S-2070

**DECO SILL TRIM**

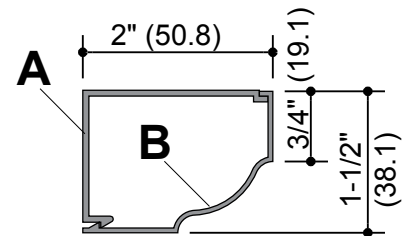
DECO SILL TRIM & #2 CLIP



A	CLIP S-1253
B	TRIM S-1252

**#41 TRIM**

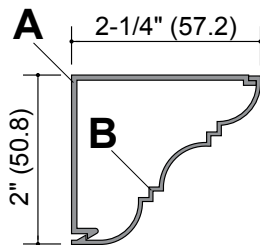
#41 TRIM & #41 CLIP



A	CLIP S-1703
B	TRIM S-1704

**#25 TRIM**

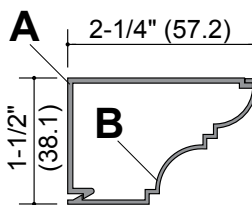
#25 TRIM & #9 CLIP



A	CLIP S-088
B	TRIM S-1350

**#26 TRIM**

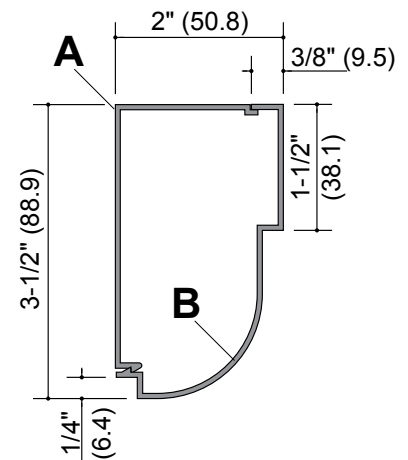
#26 TRIM & #26 CLIP



A	CLIP S-1352
B	TRIM S-1351

**#56 TRIM**

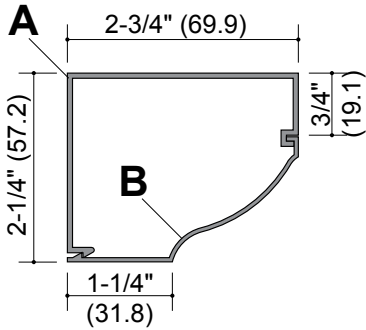
#56 TRIM & #22 CLIP



A	CLIP S-1266
B	TRIM S-2247

**#38 TRIM**

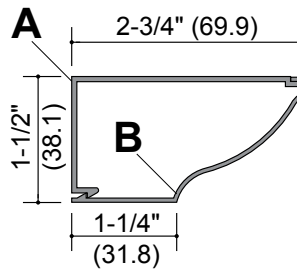
#38 TRIM & #40 CLIP



A	CLIP S-1701
B	TRIM S-1696

**#38 TRIM**

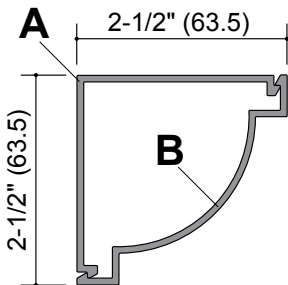
#38 TRIM & #38 CLIP



A	CLIP S-1695
B	TRIM S-1696

**#83 TRIM**

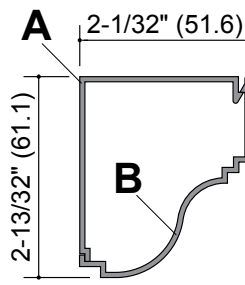
#83 TRIM & #83 CLIP



A	CLIP S-3059
B	TRIM S-3060

**#82 TRIM**

#82 TRIM & #9 CLIP

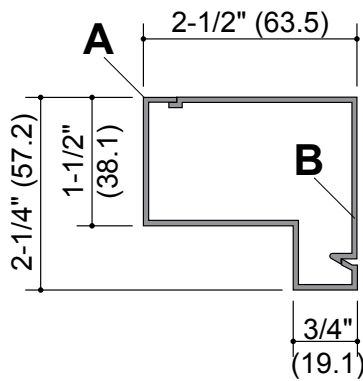


A	CLIP S-088
B	TRIM S-3110

## Offset Miscellaneous

### #80 TRIM

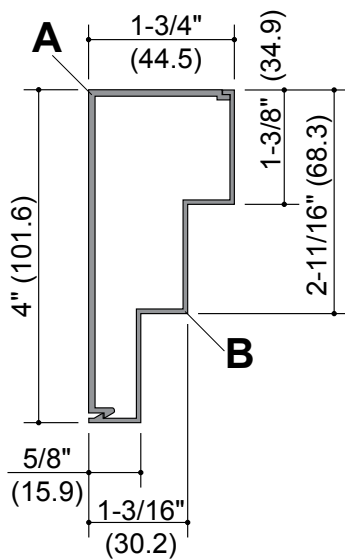
#80 TRIM & #9 CLIP



A	TRIM S-3094
B	CLIP S-088

### #10 TRIM

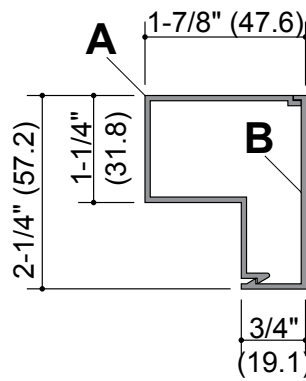
#10 TRIM & #10 CLIP



A	CLIP S-090
B	TRIM S-091

### #8 TRIM & #8 CLIP

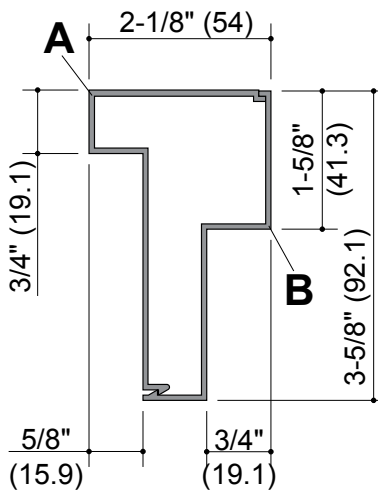
#8 TRIM & #8 CLIP



A	CLIP S-1256
B	TRIM S-1254

### #50 TRIM & #50 CLIP

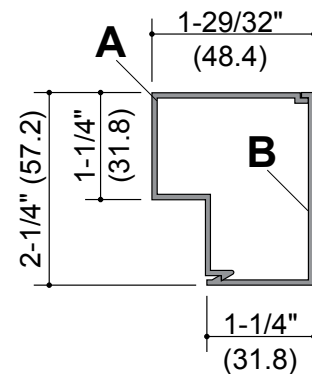
#50 TRIM & #50 CLIP



A	CLIP S-1983
B	TRIM S-1982

### #3A TRIM & #3 CLIP

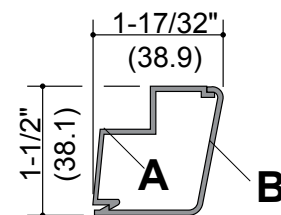
#3A TRIM & #3 CLIP



A	CLIP S-1255
B	TRIM S-013

### #62 TRIM

#62 TRIM & #62 CLIP

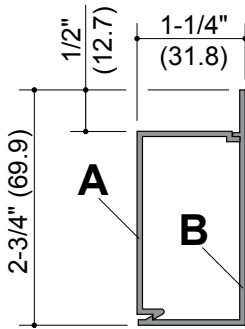


A	CLIP S-2552
B	TRIM S-2551

## Extended Leg

### #3B TRIM

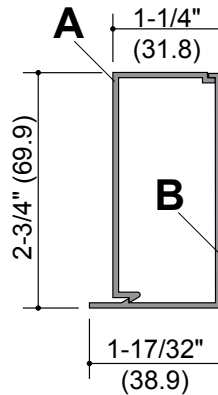
#3B TRIM & #3 CLIP



A	CLIP S-014
B	TRIM S-2010

### #35 TRIM

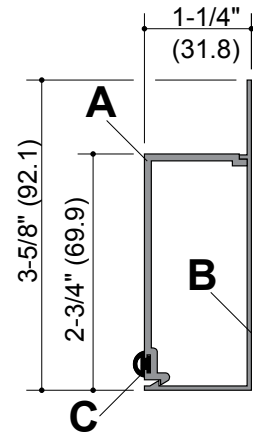
#35 TRIM & #7 CLIP



A	CLIP S-022
B	TRIM S-1631

### #7A TRIM

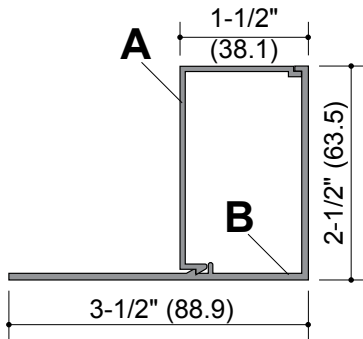
#7A TRIM & #7A CLIP



A	CLIP S-057
B	TRIM S-055
C	20-4162

**#43 TRIM**

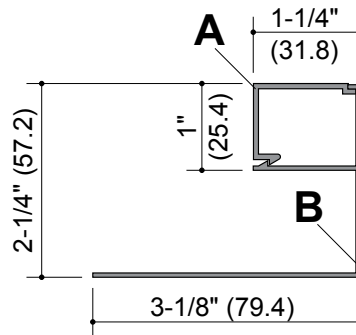
#43 TRIM & #43 CLIP



A	CLIP S-1823
B	TRIM S-1822

**#55 TRIM**

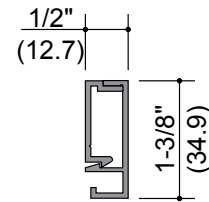
#55 TRIM & #36 CLIP



A	CLIP S-1648
B	TRIM S-2229

**TILT STOP TRIM**

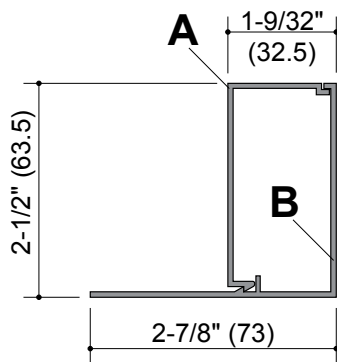
TILT STOP TRIM & CLIP



A	CLIP S-940
B	TRIM S-939

**#29 TRIM**

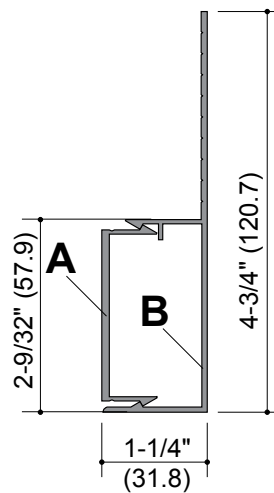
#29 TRIM & #29 CLIP



A	CLIP S-1467
B	TRIM S-1466

**#7B TRIM**

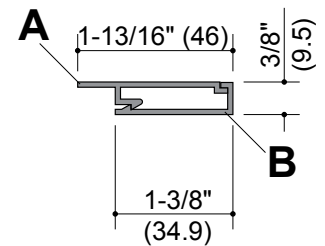
#7B TRIM & 3/4" STOOL CLIP



A	CLIP S-025
B	TRIM S-1226

**#45 TRIM**

#45 TRIM & # 45 CLIP



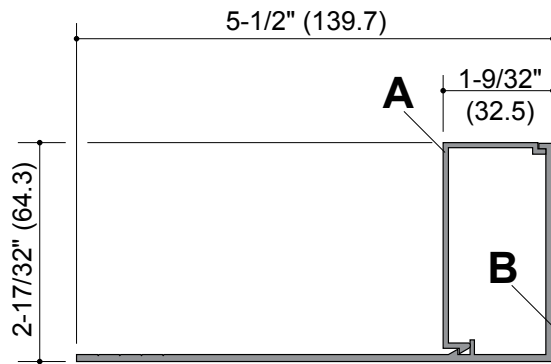
A	CLIP S-1832
B	TRIM S-1831



## Offset And Miscellaneous

### #70 TRIM

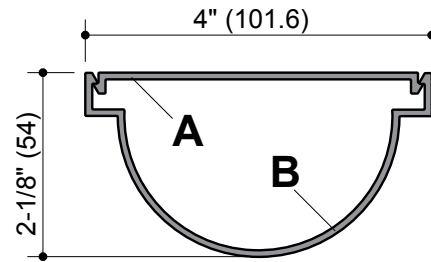
#70 TRIM & #70 CLIP



A	CLIP S-1467
B	TRIM S-2675

### #84 TRIM

#84 TRIM & #84 CLIP

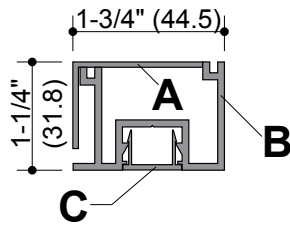


A	CLIP S-3062
B	TRIM S-3063

**FOR CURVED WINDOWS**

**#15 TRIM**

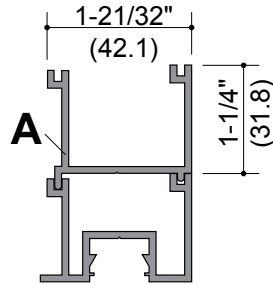
#15 TRIM & #15 TRIM INSERT CLIP



A	CLIP S-078
B	TRIM S-255
C	INSERT CLIP S-256
<b>NOTE:</b> USED WITH 1" LENGTHS OF S-078 1" x 1-1/2" x 0.625" ANGLE	

**#15 TRIM EXTENDER**

CURVE TRIM EXTENDER



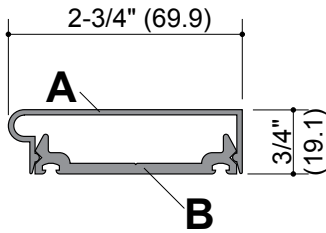
A	TRIM EXTENDER S-261
<b>NOTE:</b> DESIGNED TO BE STACKED WITH #15 TRIM	

**#85 TRIM**

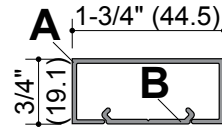
#85 TRIM & PRESSURE PLATE

**3/4" x 1-3/4" (19.1 x 44.5) TRIM**

3/4" x 1-3/4" (19.1 x 44.5) TRIM & CLIP



A	CLIP S-3092
B	TRIM S-212

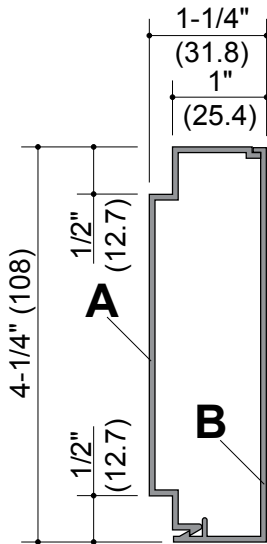


A	CLIP S-416
B	TRIM S-415

## Miscellaneous

### #59 TRIM

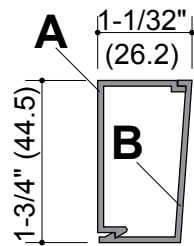
#59 TRIM & #59 CLIP



A	CLIP S-2357
B	TRIM S-2356

### #68 TRIM

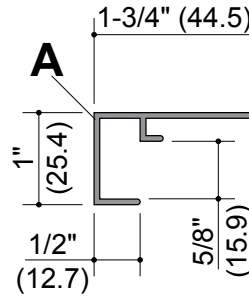
#68 TRIM & #34 CLIP



A	CLIP S-2357
B	TRIM S-2609

### 1" (25.4) G.W.B. TRIM

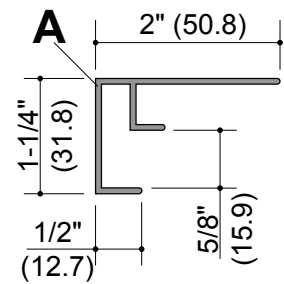
1" (25.4) G.W.B. TRIM



A	TRIM S-1357
---	-------------

### 1-1/4" (31.8) G.W.B. TRIM

1-1/4" (31.8) G.W.B. TRIM

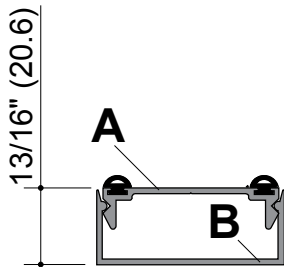


A	TRIM S-10555
---	--------------

## Special

### 2" SPECIAL TRIM

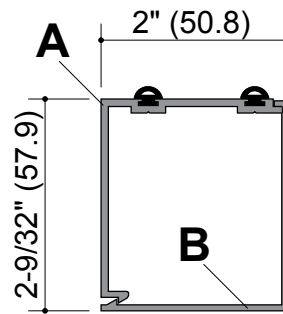
2" SPECIAL TRIM CLIP



A	CLIP S-1387
B	TRIM S-1363

### #12 TRIM

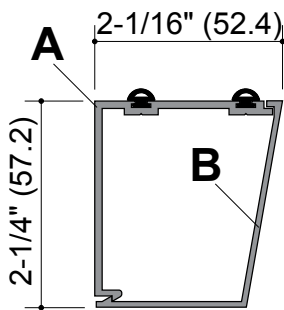
#12 TRIM & #12 PRESSURE CLIP



A	CLIP S-029
B	TRIM S-028

### #54 TRIM

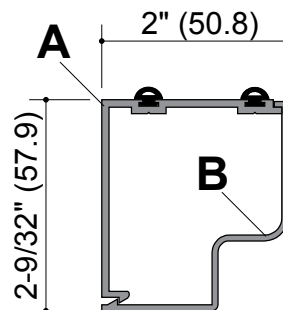
#54 TRIM & #54 PRESSURE CLIP



A	CLIP S-029
B	TRIM S-2185

### #20 TRIM

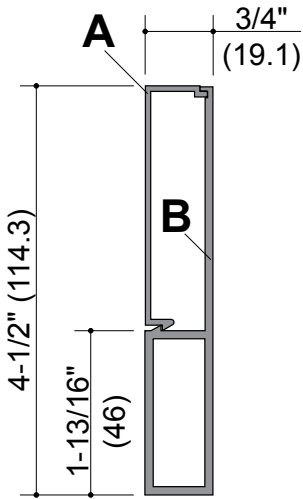
#20 TRIM & #20 PRESSURE CLIP



A	CLIP S-029
B	TRIM S-981

**4-1/2" (114.3) TRIM**

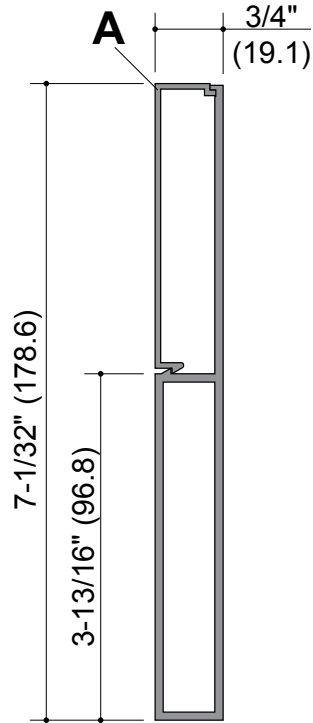
4-1/2" (114.3) INTERIOR TRIM



A	CLIP S-1349
B	TRIM S-1962

**7" (177.8) TRIM**

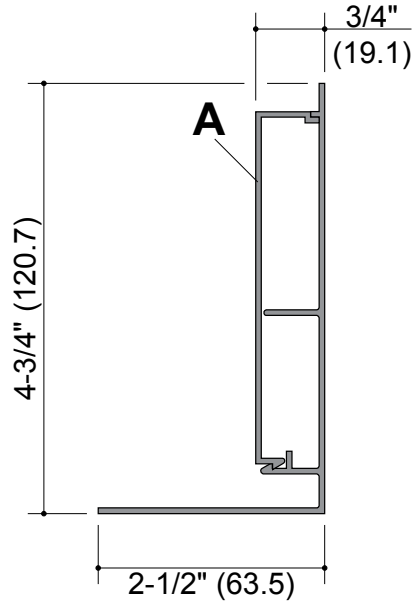
7" (177.8) INTERIOR TRIM



A	CLIP S-1547
---	-------------

**4-3/4" (120.7) TRIM**

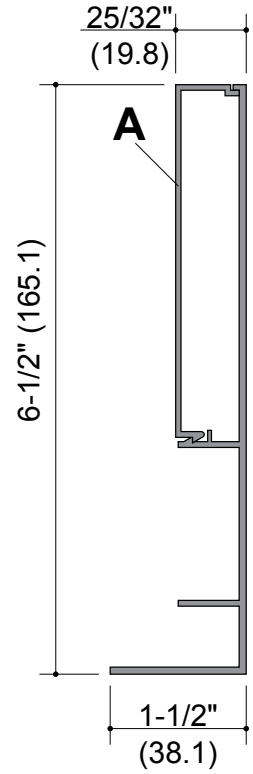
4-3/4" (120.7) TRIM & #16 CLIP



A	CLIP S-359
---	------------

**WESTIN TRIM**

WESTIN TRIM & #16 CLIP



A	CLIP S-359
---	------------

## Notes

## Notes And Disclaimers

Laws and building and safety codes governing the design and use of Kawneer products, such as glazed entrance, window, and curtain wall products, vary widely. Kawneer does not control the selection of product configurations, operating hardware, or glazing materials, and assumes no responsibility therefor. It is the responsibility of the owner, the specifier, the architect, the general contractor, and the installer and the fabricator/transformer, consistent with their roles, to determine the appropriate materials for a project in strict conformity to all applicable national, regional and local building codes and regulations.

Kawneer reserves the right to change configuration without prior notice when deemed necessary for product improvement.

Information contained herein or related hereto is intended only for evaluation by technically skilled persons, with any use thereof to be at their independent discretion and risk. Such information is believed to be reliable, but Kawneer shall have no responsibility or liability for results obtained or damages resulting from such use.

Kawneer grants no licence under, and shall have no responsibility or liability for infringement of, any patent or other proprietary right. Nothing in this document should be construed as a warranty or guarantee by Kawneer, and the only applicable warranties will be those set forth in Kawneer acknowledgment or in any printed warranty documents issued by Kawneer. The foregoing may be waived or modified only in writing by a Kawneer officer.

© 2019, Kawneer Company, Inc.