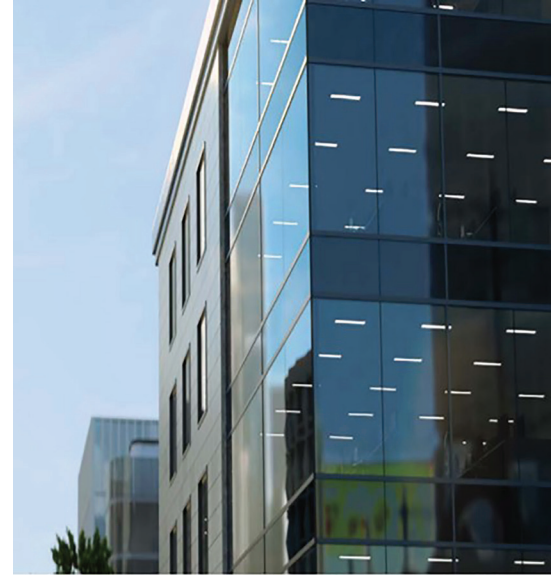


## 1602UT/1620UT SSG Curtain Wall System

Kawneer’s commitment to social and environmental responsibility is rooted in high performing, sustainable solutions that extend beyond energy efficiency to elements like daylighting, acoustical efficiency, recyclability, occupant security and occupant comfort.

Our extrusions use a minimum of 40% recycled content achieved through a combination of pre- and post-consumer recycled content. We also have Environmental Product Declarations (EPDs) that when coupled with this Material Transparency Summary (MTS) gives a full sustainable product overview. Sustainability information on this product as well as our entire portfolio can be found on the [Sustainability page at www.kawneer.com](http://www.kawneer.com)



### Material Inventory

The material inventory below discloses the known ingredients within this product at a concentration level of 100 PPM (0.01%) and higher, the Chemical Abstract Services Registration Number (CAS#), role and percent by weight within the product. This inventory list meets the guidelines for **LEED v4 MR Credit: Building Disclosure and Optimization – Material Ingredients – Option 1 and LBC Materials Petal I10-2 Supporting Data and has no LBC Red List materials.**\* This product is manufactured at one of our five North American locations: Bloomsburg, PA; Cranberry, PA; Lethbridge, Canada; Springdale, AR and Visalia, CA.

Role	Complex Material	Raw Material	CAS#	Percent by Weight
Frame	Anodized Aluminum	Aluminum	7429-90-5	90-98
Thermal & Weathering	Nylon 6	Polyamide	25038-54-4	2-3
		Glass Oxide	65997-17-3	1.0-1.5
		Zinc Sulfide	1314-98-3	<1.0
	EPDM Compound	Ethylene Propylene Diene Terpolymer	25038-36-2	<1.0
		Carbon Black	1333-86-4	<1.0
		Kaolin	1332-58-7	<0.1
		Dicumyl Peroxide	80-43-3	<0.1
		Zinc Oxide	1314-13-2	<0.1
		Calcium Oxide	1305-78-8	<0.1
		Calcium Carbonate	471-34-1	<0.1
		Polyethylene	9002-88-4	<0.1
	Polyurethane mixture	Polymeric Diphenylmethane	9016-87-9	<0.5
		4,4' - Diphenylmethane Diisocyanate	101-68-8	<0.5
		Glycerine Propoxylated-Ethoxylated Polyols	9082-00-2	<0.25
		Glycerine Propoxylated Polyols	25791-96-2	<0.25
		Diethylene Glycol Phthalic Anhydride	32472-85-8	<0.25
		Propoxylated Sucrose	9049-71-2	<0.1
		Dipropylene Glycol	25265-71-8	<0.1
		Diethylene Glycol	111-46-6	<0.1
		Ethylene Glycol	107-21-1	<0.1
		Diethyltoluenediamine	68479-98-1	<0.1
		Carbon Black	1333-86-4	<0.1
		Diphenylmethane Diisocyanate	26447-40-5	<0.1
	ABS Compound	Acrylonitrile Butadiene Styrene	9003-56-9	<0.05
Fasteners	Stainless Steel	Stainless Steel	12597-68-1	<1.0

\* For standard anodized configurations and may not comply with all configurations, finishes or custom products